



## LETTER OF TRANSMITTAL

**To:** Suzanne Simone **Date:** March 15, 2021  
**Company:** Cheshire IWWC **Project No.:** 141.15346.00001  
**Address:** 84 South Main Street  
Cheshire, Connecticut 06410  
PHONE: 203-271-6670  
**Re:** Romanik Lot Plot Plan (MBL: 59-3) South Meriden Road (Route 70)

### FOR YOUR:

- ☒ Use
- ☒ Approval
- ☒ Review/Comments
- ☐ Information
- ☐ Other:

### SENT VIA: EMAIL

- ☐ U.S. Postal Service
- ☐ Overnight
- ☐ Under Separate Cover
- ☐ Hand-Carried (Courier)
- ☐ Picked Up

DATE	QUANTITY	DESCRIPTION
03/15/2021	1	Construction Sequence
03/15/2021	1	Filtrexx Siltsoxx General Information
03/15/2021	1	Filtrexx Siltsoxx Design Specifications
03/15/2021	1	Filtrexx Siltsoxx Installation Specifications

### Remarks:

Digital submission of additional submission materials for Cheshire IWWC. Please request hard copies if they are required.

cc: Jocelyn Patrignelli

By: Scott Nolan, E.I.T.

# DESIGN SPECIFICATION

## 1.1 Perimeter Control - Compost Filter Sock

### PURPOSE & DESCRIPTION

**Filtrex<sup>®</sup> SiltSoxx<sup>™</sup> compost filter sock** is a three-dimensional tubular sediment control and stormwater runoff filtration device typically used for **Perimeter Control** of sediment, on and around construction activities. Perimeter control traps sediment by *filtering* runoff water as it passes through the matrix of the Soxx<sup>™</sup> and by allowing water to temporarily pond behind the Soxx, allowing *deposition* of suspended solids. Perimeter control is also used to reduce runoff flow velocities on sloped surfaces.

### APPLICATION

Perimeter control is to be installed down slope of any disturbed area requiring erosion and sediment control and filtration from runoff. Perimeter control is effective when installed perpendicular to sheet or low concentrated flow, and in areas that silt fence is normally considered appropriate. Acceptable applications include:

- Site perimeters
- Above and below disturbed areas subject to sheet runoff, interrill and rill erosion
- Above and below exposed and erodable slopes
- Along the toe of stream and channel banks
- Around area drains or inlets located in a 'sump'
- On compacted soils where trenching of silt fence is difficult or impossible
- Around sensitive trees where trenching of silt fence is not beneficial for tree survival or may unnecessarily disturb established vegetation
- On frozen ground where trenching of silt fence is impossible
- On paved surfaces where trenching of silt fence is impossible

Perimeter control can be applied to areas of high sheet runoff and erosion, on slopes up to a 1:1 grade (should be used in conjunction with slope stabilization/erosion control technology on slopes > 4:1), around inlets, and in other disturbed areas of construction sites requiring sediment control. Perimeter control may also be used in sensitive environmental areas, where migration of wildlife may be impeded by the use of fences or trenching may damage roots.

It is possible to drive over perimeter control during construction (although not recommended), however, these areas should be immediately repaired by manually moving perimeter control back into place, if disturbed. Continued heavy construction traffic may destroy the fabric mesh, reduce the dimensions, and reduce the effectiveness of the perimeter control.

### ADVANTAGES AND DISADVANTAGES

#### Advantages

- Tubular filtration matrix allows for better trapping and removal of sediment in stormwater runoff compared to planar constructed sediment control devices (i.e., silt fence).
- Greater surface area contact with soil than typical sediment control devices reduces potential for runoff to create rills under the device leading to unfiltered sediment.
- No trenching is required; therefore soil is not disturbed upon installation or removal.
- Perimeter control can be installed year-round in difficult soil conditions such as frozen or wet ground, and dense and compacted soils, as long as stakes can be driven.
- Perimeter control is easily implemented as a treatment in a greater treatment train approach to erosion and sediment control.

- Soxx (the mesh netting containment system) allows perimeter control to be placed in areas of high sheet flow and low concentrated flow.
- Perimeter control can be direct seeded at time of application to provide greater stability and filtration capability once vegetation is established.
- FilterMedia is organic and can be left on site after permanent stabilization is complete, to be used in landscape design and/or seeded and planted with permanent vegetation.
- FilterMedia improves existing soil structure if spread out and used as a soil amendment after construction activity is complete.
- Biodegradable or photodegradable perimeter control can be left on site after construction activity and may eliminate the need for removal and labor and disposal costs.
- Perimeter control can be used on slopes to slow down runoff velocity, disperse concentrated runoff, and reduce effective slope lengths, reducing the erosive potential of stormwater runoff.
- Perimeter control is less likely to obstruct wildlife movement and migration than planar/silt fence sediment control practices.
- Perimeter control is available in 5 in. (125mm), 8 in. (200mm), 12 in. (300mm), 18 in. (450mm), 24 in. (600mm), and 32 in. (800mm) diameters for customized applications and challenging situations.
- Perimeter control is available in continuous lengths to prevent weak sections and creation of concentrated flow situations typical to low points in runs of other sediment control devices. End points are sleeved together to form continuous runs of unlimited lengths without low or break points.
- Perimeter control may assist in qualification for LEED<sup>®</sup> Green Building Rating and Certification credits under LEED Building Design & Construction (BD+C), New Construction v4. Awarded credits may be possible from the categories of Sustainable Sites, Water Efficiency, Materials & Resources, and Innovation. *Note: LEED is an independent program offered through the U.S. Green Building Council. LEED credits are determined on a per project basis by an independent auditing committee. Filtrex neither guarantees nor assures LEED credits from the use of its products. LEED is a trademark of the U.S. Green Building Council.*

### ADVANTAGES

	LOW	MED	HIGH
Installation Difficulty	✓		
Durability			✓
Sediment Control			✓
Runoff Flow Control		✓	
Life Cycle Cost	✓		
AASHTO & USEPA NPDES Phase II Approved	YES		

**Disadvantages**

- If filler material of perimeter control is not Filtrex<sup>®</sup> Certified<sup>SM</sup> FilterMedia<sup>™</sup>, performance may be diminished.
- If not installed correctly, maintained or used for a purpose or intention that does not meet specifications performance may be diminished.
- If land surface is extremely bumpy, rocky, or changes elevation abruptly ground surface contact to perimeter control may be diminished thereby adversely effecting performance.

**MATERIAL SPECIFICATIONS**

Perimeter control use only photodegradable or biodegradable Sox<sup>®</sup> netting materials available from Filtrex International and are the only mesh materials accepted in creating perimeter control for any purpose. For Sox tubular mesh material specifications see Table 1.1.

**FILTERMEDIA<sup>™</sup> CHARACTERISTICS**

Specifications for perimeter control use only Filtrex Certified FilterMedia which is a coarse composted material that is specifically designed for removal of solids from stormwater runoff. All Filtrex Certified FilterMedia has been third party tested and certified to meet minimum performance criteria defined by Filtrex International. Performance parameters include; hydraulic flow through rate, total solids removal efficiency, total suspended solids removal efficiency, and turbidity reduction. For information on the physical and chemical properties of Filtrex Certified FilterMedia refer to the Filtrex Design Manual, section 5.1. Look for the Filtrex Certified FilterMedia Seal from our international network of Filtrex Certified Installers and Manufacturers.

**PERFORMANCE**

Performance testing and research on perimeter control has been extensive. Results from testing and research programs conducted on perimeter control include: hydraulic flow through rate, ponding rate and calculation (behind perimeter control), sediment storage capacity (inside + behind tool), total solids removal efficiency, suspended solids removal efficiency, and turbidity reduction. For a summary of performance testing, research results, and design specifications see Table 1.1 and Table 1.2. For copies of full reports visit [www.filtrex.com](http://www.filtrex.com).

Successful bidders will furnish adequate research support showing their manufactured product meets or exceeds performance and design criteria outlined in this standard specification. Research or performance testing will be accepted if it meets the following criteria: conducted by a neutral third party, utilizes standard test methods reported by ASTM or referenced in a peer reviewed scientific journal, product and control treatments are tested in triplicate, performance results are reported for product and control (control should be a bare soil under the same set of environmental and experimental conditions), results are peer reviewed, results indicate a minimum 60% TSS removal efficiency and a minimum hydraulic flow through rate of 5 gpm/ft<sup>2</sup>. Bidders shall attach a copy of the research report indicating test methodologies utilized and results.

*Note: the Contractor is responsible for establishing a working erosion and sediment control system and may, with approval of the Engineer, work outside the minimum construction requirements as needed. Where the perimeter control deteriorates or fails, it shall be repaired or replaced with an effective alternative.*

**DESIGN CRITERIA**

The sediment removal process characteristic to perimeter control combines both filtering and deposition from settling solids. This is different than methods that rely on ponding for deposition of solids for perimeter control (i.e., silt fence). Ponding occurs when water flowing to the perimeter control accumulates faster than the hydraulic flow through rate of the perimeter control. Typically, hydraulic flow-through rates for perimeter control are 50% greater than geotextile filter fabric (silt fence). *Greater hydraulic flow-through rates reduce ponding, therefore reducing the need for taller sediment control structural design height.* Additionally, perimeter control does not blind as easily with small soil/sediment colloids, such as clay soils, as do planar geotextile sediment control barriers (such as silt fence). However, installation and maintenance is especially important for proper function and performance. For engineering design details see Figure 1.1. For a summary of specifications for product/practice use, performance and design see Table 1.1 and Table 1.2.

For most standard perimeter control applications, a 12 in (300mm) diameter perimeter control can replace a 24 to 36 in (600 to 900mm) silt fence. See Table 1.3 and 1.4 and Figure 1.2 for standard design specifications for maximum allowable slope lengths. Note: In some low flow conditions, an 8 in (200mm) perimeter control may replace a 24 in (600mm) silt fence. Design consideration should be given to the duration of the project, total area of disturbance, rainfall/runoff potential, soil erosion potential, and sediment loading.

**Runoff Flow:**

Sheet runoff flow and ponding depth should not exceed the height of the perimeter control. If overflow of the device is a possibility, larger diameter perimeter control should be constructed, other sediment control devices may be used, or management practices to reduce runoff should be installed. Alternatively, a second perimeter control may be constructed or used in combination with compost erosion control blankets or rolled erosion control blankets to slow runoff and reduce erosion.

**Level Contour:**

Perimeter control should be placed on level contours to assist in dissipating low concentrated flow into sheet flow and reducing runoff flow velocity. Do not construct perimeter control to concentrate runoff or channel water. Sheet flow of water should be perpendicular to the perimeter control at impact and relatively un-concentrated. Placing perimeter control on undisturbed soil will reduce the potential for undermining.

**Runoff and Sediment Accumulation:**

Where possible, perimeter control should be placed at a 5 ft (1.5m) or greater distance away from the toe of the slope to allow for proper runoff accumulation for sediment deposition and to allow for maximum sediment storage capacity behind the device. If a 5 ft (1.5m) distance is not available, due to construction restrictions, a second perimeter control may be installed to increase ponding and sediment accumulation capacity. Steeper slopes allow less sediment storage behind the perimeter control device and may require larger perimeter control or shorter slope lengths.

**End Around Flow:**

In order to prevent water flowing around the ends of perimeter control, the ends of the perimeter control must be constructed pointing upslope so the ends are at a higher elevation. A minimum

of 10 linear ft (3m) per end each placed at a 30 degree angle is recommended.

#### **Vegetated Perimeter Control:**

For permanent areas perimeter control can be direct-seeded to allow vegetation established directly in the device, and may be expanded to 5 ft (1.5m) upslope and downslope from the device, for added performance. Vegetation on and around the perimeter control will assist in slowing runoff velocity for increased deposition and filtration. The option of adding vegetation will be at the discretion of the Engineer. No additional soil amendments or fertilizer are required for vegetation establishment in the perimeter control.

#### **Slope Spacing & Drainage Area:**

Maximum drainage area to, and slope spacing between perimeter control is dependent on: rainfall intensity and duration used for specific design/plan, slope steepness, and width of area draining to the perimeter control. A specification for maximum slope lengths, based on a 1 in (25 mm)/24 hr rainfall event is provided in Table 1.3 and Figure 1.2; and for a 2 in (50 mm)/24 hr rainfall event is provided in Table 1.4.

#### **INSTALLATION**

1. Perimeter control used for control of sediment in storm runoff shall meet Filtrexx Soxx Mesh Material and Filtrexx Certified FilterMedia specifications.
2. Call Filtrexx at 877-542-7699 or visit [www.filtrexx.com](http://www.filtrexx.com) for a current list of installers and distributors of Filtrexx products.
3. Perimeter control will be placed at locations indicated on plans and in a manner as directed by the Engineer or Manufacturer.
4. Perimeter control should be installed parallel to the base of the slope or other disturbed area. In challenging conditions (i.e., 2:1 slopes), a second perimeter control shall be constructed at the top of the slope, or staking may be increased.
5. Effective Soxx height in the field should be as follows: 5" diameter Soxx = 4" high; 8" diameter Soxx = 6.5" high; 12" diameter Soxx = 9.5" high; 18" diameter Soxx = 14.5" high; 24" diameter Soxx = 19" high.
6. Stakes should be installed through the middle of the perimeter control on 10 ft (3m) centers, using nominal 2 in (50mm) by 2 in (50mm) by 3 ft (1m) wooden stakes. 5" diameter Soxx may use 1" (25 mm) x 1" (25 mm) x 18" (0.5 m) wooden stakes. In the event staking is not possible, i.e., when perimeter control is used on highly compacted soils or impervious surfaces, sand bags (or equivalent) may be used to stabilize Soxx, as long as effective height is not compromised. On impervious surfaces, concrete blocks (or equivalent) may be used behind the perimeter control to help stabilize during rainfall/runoff events.
7. Alternatively, stakes may be installed directly behind the Soxx at a 90-degree angle to level ground (regardless of slope angle), where stakes are in direct contact with the downslope side of Soxx. If high runoff or sediment accumulation is expected, staking through the Soxx may be required.
8. Staking depth for sand and silt loam soils shall be 12 in (300mm), and 8 in (200mm) for clay soils.
9. Loose compost may be backfilled along the upslope side of the perimeter control, filling the seam between the soil surface and the device, improving filtration and sediment retention.
10. If the perimeter control is to be left as a permanent filter or part of the natural landscape, it may be seeded at time of installation for establishment of permanent vegetation. The Engineer will specify seed requirements.

11. Perimeter control is not to be used in perennial, ephemeral, or intermittent streams.

See design drawing schematic for correct installation (Figure 1.1).

#### **INSPECTION**

Routine inspection should be conducted within 24 hrs of a runoff event or as designated by the regulating authority. Perimeter control should be regularly inspected to make sure they maintain their shape and are producing adequate hydraulic flow-through. If ponding becomes excessive, additional perimeter control may be required to reduce effective slope length or sediment removal may be necessary. Perimeter control shall be inspected until area above has been permanently stabilized and construction activity has ceased.

#### **MAINTENANCE**

1. The Contractor shall maintain the perimeter control in a functional condition at all times and it shall be routinely inspected.
2. If the perimeter control has been damaged, it shall be repaired, or replaced if beyond repair.
3. The Contractor shall remove sediment at the base of the upslope side of the perimeter control when accumulation has reached 1/2 of the effective height of the Soxx, or as directed by the Engineer. Alternatively, a new perimeter control can be placed on top of and slightly behind the original one creating more sediment storage capacity without soil disturbance.
4. Perimeter control shall be maintained until disturbed area above the device has been permanently stabilized and construction activity has ceased.
5. The FilterMedia will be dispersed on site once disturbed area has been permanently stabilized, construction activity has ceased, or as determined by the Engineer.
6. For long-term sediment and pollution control applications, perimeter control can be seeded at the time of installation to create a vegetative filtering system for prolonged and increased filtration of sediment (contained vegetative filter strip). The appropriate seed mix shall be determined by the Engineer.

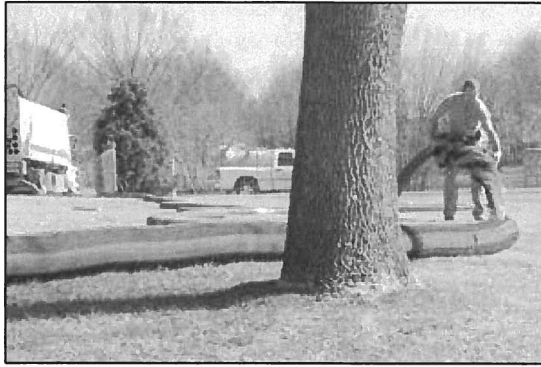
#### **DISPOSAL/RECYCLING**

FilterMedia is a composted organic product recycled and manufactured from locally generated organic, natural, and biologically based materials. Once all soil has been stabilized and construction activity has been completed, the FilterMedia may be dispersed with a loader, rake, bulldozer or similar device and may be incorporated into the soil as an amendment or left on the soil surface to aid in permanent seeding or landscaping. Leaving the FilterMedia on site reduces removal and disposal costs compared to other sediment control devices. The mesh netting material will be extracted from the FilterMedia and disposed of properly by the Contractor. The photodegradable mesh netting material (Soxx) may degrade if left on site. Biodegradable mesh netting material is available and may eliminate the need and cost of removal and disposal.

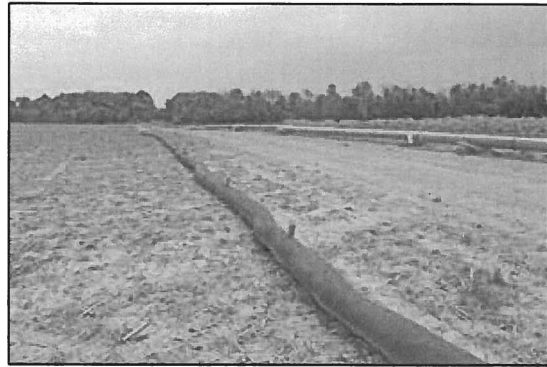
#### **METHOD OF MEASUREMENT**

Bid items shall show measurement as 5 (125), 8 (200), 12 (300), 18 (450), 24 (600), 32 (800) inch (mm) diameter Filtrexx® Perimeter Control or SiltSoxx™ per linear foot (or linear meter), installed. Engineer shall notify Filtrexx of location, description, and details of project prior to the bidding process so that Filtrexx can provide design aid and technical support.

## FIELD APPLICATION PHOTO REFERENCES



Installation Method – Blower Truck



Perimeter Control on Pipeline Project



Installation Method – Pallets



Perimeter Control on Roadway Project

## ADDITIONAL INFORMATION

For other references on this topic, including additional research reports and trade magazine and press coverage, visit the Filtrexx website at [filtrexx.com](http://filtrexx.com)

Filtrexx International, Technical Support  
877-542-7699 | [www.filtrexx.com](http://www.filtrexx.com) | [info@filtrexx.com](mailto:info@filtrexx.com)  
Call for complete list of international installers and distributors.

BactoLoxx, branch & leaf logo, DuraSoxx, EnviroSoxx, Filtrexx, GreenLoxx, GroSoxx, Let Nature Do It, MetalLoxx, NutriLoxx, and PetroLoxx, are Registered Trademarks of Filtrexx International.

BioSoxx, CECB [Compost Erosion Control Blanket], CSWB [Compost Storm Water Blanket], DitchChexx, EdgeSaver, FilterCell, FilterMedia, FilterSoxx, GrowingMedia, InletSoxx, LivingWall, Lockdown, NitroLoxx, PhosLoxx, SiltSoxx, Soft Blocks, and Soxx are Trademarks of Filtrexx International.

Filtrexx Certified and its accompanying logo are Service Marks of Filtrexx International.

The information contained herein may be subject to confidential intellectual property of Filtrexx International, including but not limited to US Patents 7,226,240; 7,452,165; 7,654,292; 8,272,812; 8,439,607; 8,740,503; 8,821,076; 9,044,795; 9,945,090; and 9,982,409 or Patents Pending and is the property of Filtrexx International.

Copyright 2005-2020, Filtrexx International, all rights reserved. Unauthorized reproduction prohibited. All statements, product characteristics, and performance data contained herein are believed to be reliable based on observation and testing, but no representations, guarantees, or warranties of any kind are made as to accuracy, suitability for particular applications, or the results to be obtained. Nothing contained herein is to be considered to be permission or a recommendation to use any proprietary process or technology without permission of the owner. No warranty of any kind, expressed or implied, is made or intended.

**REFERENCES CITED & ADDITIONAL RESOURCES**

- American Association of State Highway Transportation Officials. 2003. Standard Specification for Transportation Materials and Methods of Sampling and Testing, Designation M9-03, Compost for Erosion/Sediment Control. Washington, DC
- Faucette, L.B., K. Kerchner, and A. Vick. 2006. Sediment Storage Capacity of Sediment control vs. Silt Fence. Filtrexx® Tech Link #3314
- Faucette, L.B., H. Keener, M. Klingman, and K. Kerchner. 2006. Design Capacity Prediction Tool for Sediment control and Silt Fence. Filtrexx® Tech Link #3313 (Description of Design Tool) and Filtrexx® Library #301 (Design Tool)
- Faucette, L.B. 2006. Flow-Through Rate, Design Height, and Design Capacity of Sediment control and Silt Fence. Filtrexx® Tech Link #3304
- Faucette, L.B. 2006. Design Height, Flow-Through Rate, and Slope Spacing of Sediment control and Silt Fence. Filtrexx® Tech Link #3311
- Faucette, L.B., and R. Tyler. 2006. Organic BMPs used for Storm Water Management. Proceedings of the International Erosion Control Association Annual Conference, Long Beach, CA 2006.
- Faucette, B. F. Shields, and K. Kurtz. 2006. Removing storm water pollutants and determining relations between hydraulic flow-through rates, pollutant removal efficiency, and physical characteristics of compost filter media. Second Interagency Conference on Research in Watersheds, 2006 Proceedings. Coweeta Hydrologic Research Station, NC. Filtrexx® Library #106.
- Faucette, B., Sadeghi, A., and K. Sefton. 2006. USDA ARS - Evaluation of Compost Filter Socks and Silt Fence in Sediment and Nutrient Reduction from Runoff. Filtrexx® Tech Link #3308
- Faucette, L.B., A. Vick. 2006. LEED Green Building Credits using Filtrexx® Organic BMPs. Filtrexx® Tech Link #3301
- Faucette, L.B. A. Vick, and K. Kerchner. 2006. Filtrexx®, Compost, Low Impact Development (LID), and Design Considerations for Storm Water Management. Filtrexx® Tech Link #3306
- Faucette L.B., C.F. Jordan, L.M. Risse, M. Cabrera, D.C. Coleman, and L.T. West. 2005.
- Evaluation of Storm Water from Compost and Conventional Erosion Control Practices in Construction Activities. *Journal of Soil and Water Conservation*. 60:6: 288-297.
- Faucette, L.B. 2005. Removal and Degradation of Petroleum Hydrocarbons from Storm Water with Compost. Filtrexx® Tech Link #3307
- Faucette, L.B. 2005. A Comparison of Performance and Test Methods of Sediment control and Silt Fence. Filtrexx® Tech Link #3302.
- Faucette, L.B., N. Strazar, A. Marks. 2006. Filtrexx® Polymer and Flocculent Guide. Filtrexx® Library #601.
- Fifield, J. 2001. Designing for Effective Sediment and Erosion Control on Construction Sites. Forester Press, Santa Barbara, CA.
- Keener, H., B. Faucette, and M. Klingman. 2006. Flow-through rates and evaluation of solids separation of compost filter media vs. silt fence in sediment control applications. 2006 American Society of Agricultural and Biological Engineers Annual International Conference, Portland, OR. Paper No. 062060.
- Marks, A., R. Tyler, and B. Faucette. 2005. The Filtrexx® Library. Digital publication of support tools for the erosion industry. [www.filtrexx.com](http://www.filtrexx.com).
- Marks, A., and R. Tyler. 2003. Filtrexx International Company Website. Specifications, CAD drawings, case histories. [www.filtrexx.com](http://www.filtrexx.com)
- Sadhegi, A., K. Sefton, and B. Faucette. 2006. Sediment and nutrient removal from storm water with compost filter socks and silt fence. 2006 American Society of Agricultural and Biological Engineers Annual International Conference, Portland, OR. Paper No. 06XXXX
- Tyler, R.W., and A. Marks. 2004. Erosion Control Toolbox CD Kit. A Guide to Filtrexx® Products, Educational Supplement, and Project Videos. 3 CD set for Specifications and Design Considerations for Filtrexx® Products.
- Tyler, R.W., and A. Marks. 2003. Filtrexx® Product Installation Guide. Grafton, Ohio.
- Tyler, R.W., and A. Marks. 2003. A Guide to Filtrexx® Products. Product Descriptions and Specifications for Filtrexx® Products.
- Tyler, R.W., J. Hoeck, and J. Giles. 2004. Keys to Understanding How to Use Compost and Organic Matter. IECA Annual Meeting Presentations published as IECA Digital Education Library, Copyright 2004 Blue Sky Broadcast.
- Tyler, R.W. 2004. International PCT Patent Publication #: WO 2004/002834 A2. Containment Systems, Methods and Devices for Controlling Erosion. Patent Application Filed on January 8, 2004.
- Tyler, R.W. 2003. International PCT Application #: PCTUS2003/020022. Containment Systems, Methods and Devices for Controlling Erosion. Patent Application Filed on June 25, 2003.
- Tyler, R.W. 2003. US Patent Publication #: 2003/0031511 A1. Devices, Systems and Methods for Controlling Erosion. Patent Application Filed on January 13, 2003
- Tyler, R.W. 2002. US Patent Application #10/208,631. Devices, Systems and Methods for Controlling Erosion. Patent Application Filed on July 31, 2001
- Tyler, R.W. 2001. Provisional Patent Application #60/309,054. Devices, Systems and Methods for Controlling Erosion. Patent Application Filed on July 31, 2001
- Tyler, R.W. 2001. Filtrexx® Product Manual. Specifications and Design Considerations for Filtrexx® Products, Grafton, OH.
- Tyler, R.W. 1996. Winning the Organics Game – The Compost Marketers Handbook. ASHS Press, ISBN # 0-9615027-2-x..
- Tyler, R.W. 2007. US Patent # 7,226,240 “Devices, Systems and Methods for Controlling Erosion” Issue date 6-5-07.
- US EPA NPDES Phase II. 2006. Compost Filter Socks: Construction Site Storm Water Runoff Control. National Menu of Best Management Practices for Construction Sites. [http://cfpub.epa.gov/npdes/stormwater/menuofbmps/con\\_site.cfm](http://cfpub.epa.gov/npdes/stormwater/menuofbmps/con_site.cfm)

**Table 1.1. Filtrex® Soxx™ Mesh Material Specifications.**

<b>Material Type</b>	<b>NATURAL ORIGINAL</b> (Cotton Fiber)	<b>NATURAL PLUS</b> (Wood Fiber)	<b>BASIC</b> (5 mil High Density Polyethylene HDPE)	<b>BASIC PLUS</b> (Multi-Filament Polypropylene MFPP)	<b>DURABLE</b> (Multi-Filament Polypropylene MFPP)	<b>SILTSoxx ORIGINAL</b> (Multi-Filament Polypropylene MFPP)	<b>SILTSoxx EXTREME</b> (Multi-Filament Polypropylene MFPP)
Material Characteristic	Biodegradable	Biodegradable	Photodegradable	Photodegradable	Photodegradable	Photodegradable	Photodegradable
Design Diameters	5 in (125mm), 8 in (200mm), 12 in (300mm)	5 in (125mm), 8 in (200mm), 12 in (300mm)	8 in (200mm), 12 in (300mm), 18 in (400mm)	8 in (200mm), 12 in (300mm), 18 in (400mm), 24 in (600mm), 32 in (800mm)	5 in (125mm), 8 in (200mm), 12 in (300mm), 18 in (400mm), 24 in (600mm), 32 in (800mm)	5 in (125mm), 8 in (200mm), 12 in (300mm), 18 in (400mm), 24 in (600mm)	8 in (200mm), 12 in (300mm)
Mesh Opening	1/8 in (3mm)	1/8 in (3mm)	3/8 in (10mm)	3/8 in (10mm)	1/8 in (3mm)	1/8 in (3mm)	1/16 in (1.5mm)
Tensile Strength (ASTM 5035-95)	44 psi (3.09 kg/cm <sup>2</sup> )	76 psi (5.34 kg/cm <sup>2</sup> )	26 psi (1.83 kg/cm <sup>2</sup> )	44 psi (3.09 kg/cm <sup>2</sup> )	202 psi (14.2 kg/cm <sup>2</sup> )	242 psi (16.99 kg/cm <sup>2</sup> )	Under review
% Original Strength from Ultraviolet Exposure (ASTM G-155)	ND	ND	23% at 1000 hr	100% at 1000 hr	100% at 1000 hr	100% at 1000 hr	100% at 1000 hr
Functional Longevity/ Project Duration*	up to 12 months**	up to 18 months***	up to 4 yr	up to 4 yr	up to 5 yr	up to 5 yr	up to 5 yr

\* Functional longevity ranges are estimates only. Site specific environmental conditions may result in significantly shorter or longer time periods.

\*\* Data based on Caltrans research and specifications

\*\*\* See TechLink #3339 for research & testing

**Table 1.2. Filtrex® Sediment Control Performance and Design Specifications Summary.**

Design Diameter	5 in (125mm)	8 in (200mm)	12 in (300mm)	18 in (450mm)	24 in (600mm)	32 in (800mm)	Testing Lab/ Reference	Publication(s)
Design & Performance	5 in (125mm)	8 in (200mm)	12 in (300mm)	18 in (450mm)	24 in (600mm)	32 in (800mm)	Testing Lab/ Reference	Publication(s)
Effective Height	4 in (100mm)	6.5 in (160mm)	9.5 in (240mm)	14.5 in (360mm)	19 in (480mm)	26 in (650mm)	The Ohio State University, Ohio Agricultural Research and Development Center	Transactions of the American Society of Agricultural & Biological Engineers, 2006
Effective Circumference	15 in (380mm)	25 in (630mm)	38 in (960mm)	57 in (1450mm)	75 in (1900mm)	100 in (2500mm)		
Density (when filled)	7.8 lbs (12 kg/m)	13 lbs/ft (20 kg/m)	32 lbs/ft (50 kg/m)	67 lbs/ft (100 kg/m)	133 lbs/ft (200 kg/m)	200 lbs/ft (300 kg/m)	Soil Control Lab, Inc	
Air Space	20%	20%	20%	20%	20%	20%	Soil Control Lab, Inc	
Maximum continuous length	unlimited	unlimited	unlimited	unlimited	unlimited	unlimited		
Staking Requirement	10 ft (3m)	10 ft (3m)	10 ft (3m)	10 ft (3m)	10 ft (3m)	10 ft (3m)		
Maintenance Requirement (sediment accumulation removal at X height)	2 in (50mm)	3.25 in (80mm)	4.75 in (120mm)	7.25 in (180mm)	9.5 in (240mm)	13 in (325mm)		
Initial Maintenance Requirement based on Rainfall-Runoff*	13 in (33 cm); 665 L/linear m	22 in (55 cm); 1109 L/linear m	32 in (80 cm); 1388 L/linear m	42 in (105 cm); 1825 L/linear m	64 in (160 cm); 2776 L/linear m	86 in (215 cm); 3885 L/linear m	The University of Georgia & Auburn University	
Functional Longevity**	6 mo – 5 yr	6 mo – 5 yr	6 mo – 5 yr	6 mo – 5 yr	6 mo – 5 yr	6 mo – 5 yr		
Maximum Slope Length (<2%)	360 ft (110m)	600 ft (183m)	750 ft (229m)	1000 ft (305m)	1300 ft (396m)	1650 ft (500m)	The Ohio State University, Ohio Agricultural Research and Development Center	Filtrex Design Tool, Filtrex Library #301, Filtrex Tech Link #3304 & #3311
Hydraulic Flow Through Rate	4.5 gpm/ft (56 L/min/m)	7.5 gpm/ft (94 L/min/m)	11.3 gpm/ft (141 L/min/m)	15.0 gpm/ft (188 L/min/m)	22.5 gpm/ft (281 L/min/m)	30.0 gpm/ft (374 L/min/m)	The Ohio State University, Ohio Agricultural Research and Development Center; University of Guelph, School of Engineering/ Watershed Research Group	Filtrex Tech Link #3311 & #3313, #3308; American Society of Agricultural & Biological Engineers Meeting Proceedings, 2006, Second Interagency Conference on Research in Watersheds, 2006
P Factor (RUSLE)	0.1-0.32	0.1-0.32	0.1-0.32	0.1-0.32	0.1-0.32	0.1-0.32	USDA ARS Environmental Quality Lab/ University of Georgia	American Society of Agricultural & Biological Engineers Meeting Proceedings, 2006
Sediment Storage Capacity***	104 cu. in (1710cc)	174 cu. in (2850cc)	396 cu. in (6490cc)	857 cu. in (14040cc)	1631 cu. in (26840cc)	2647 cu. in (43377 cc)		Filtrex Tech Link #3314
Total Solids Removal	98%	98%	98%	98%	98%	98%	Soil Control Lab, Inc	International Erosion Control Association, 2006
Total Suspended Solids Removal	78%	78%	78%	78%	78%	78%	USDA ARS Environmental Quality Lab	Filtrex Tech Link #3308; American Society of Agricultural & Biological Engineers Meeting Proceedings, 2006
Turbidity Reduction	63%	63%	63%	63%	63%	63%	USDA ARS Environmental Quality Lab	Filtrex Tech Link #3308; American Society of Agricultural & Biological Engineers Meeting Proceedings, 2006
Clay (<0.002mm) Removal	65%	65%	65%	65%	65%	65%	USDA ARS Environmental Quality Lab	Filtrex Tech Link
Silt (0.002-0.05mm) Removal	64%	64%	64%	64%	64%	64%	USDA ARS Environmental Quality Lab	Filtrex Tech Link
Other Recommended Uses	Slope Interruption	Inlet Protection, Ditch Protection, Slope Interruption	Inlet protection, Ditch Protection, Concrete Washout, Filtration System, Slope Interruption	Ditch Protection, Concrete Washout, Filtration System	Ditch Protection, Concrete Washout, Filtration System	Ditch Protection, Concrete Washout, Filtration System		

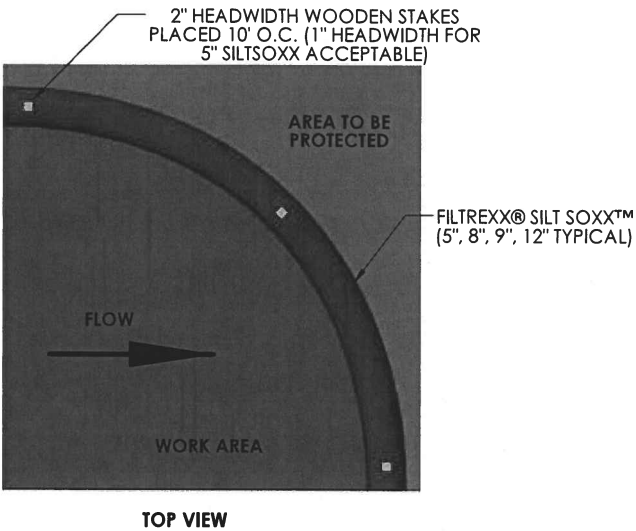
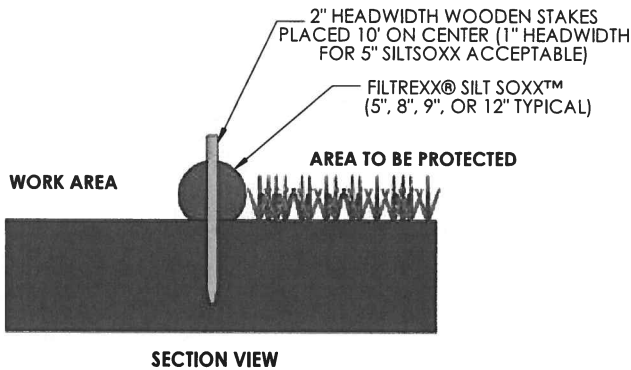
\* Based on rainfall intensity of 12.5 cm (5 in)/hr applied to a bare clay loam soil at a 10% slope; runoff flow rate of 108 ml/sec/linear m (0.52 gpm/linear ft); and mean runoff volume of 230 L/m<sup>2</sup> (6.3 g/ft<sup>2</sup>).

\*\* Functional Longevity is dependent on mesh material type, UV exposure, freeze/thaw frequency, region of US/Canada, runoff-sediment frequency/duration/loading, and adherence to specified maintenance requirement. Functional longevity ranges are estimates only. Site specific environmental conditions may result in significantly shorter or longer time periods.

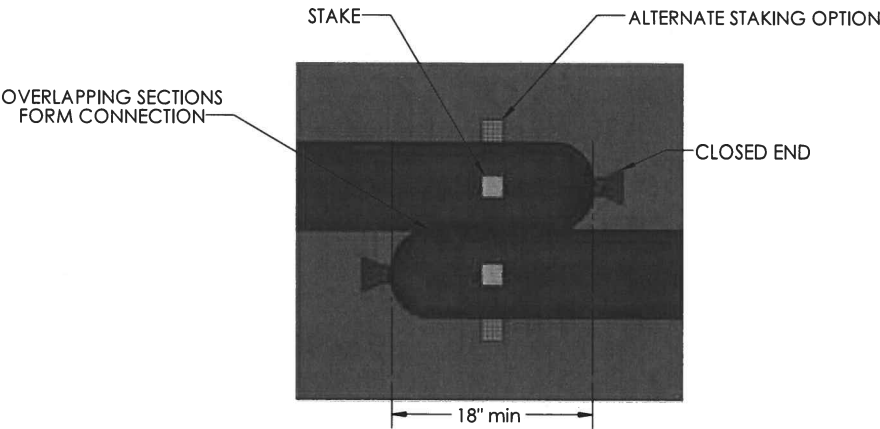
\*\*\* Sediment Storage Capacity = sediment accumulation behind (directly upslope) + within the device.

Figure 1.1. Engineering Design Drawing for Perimeter Control

**FILTREXX® SILT SOXX™**



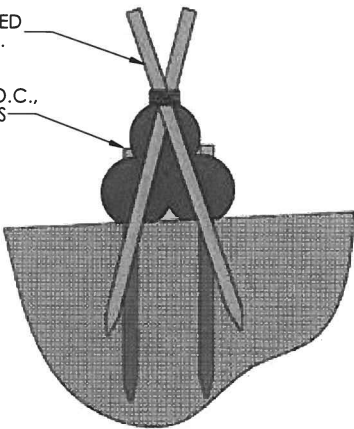
**COMPOST SOCK CONNECTION/ATTACHMENT DETAIL**



**FILTREXX® PYRAMID STAKING DETAIL**

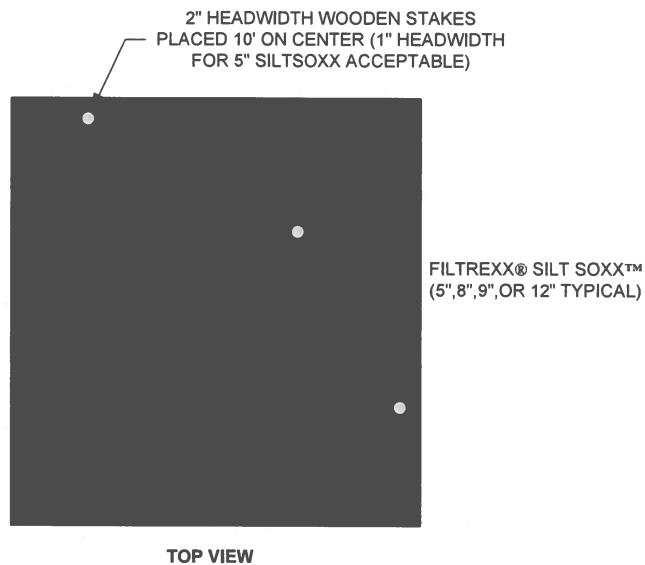
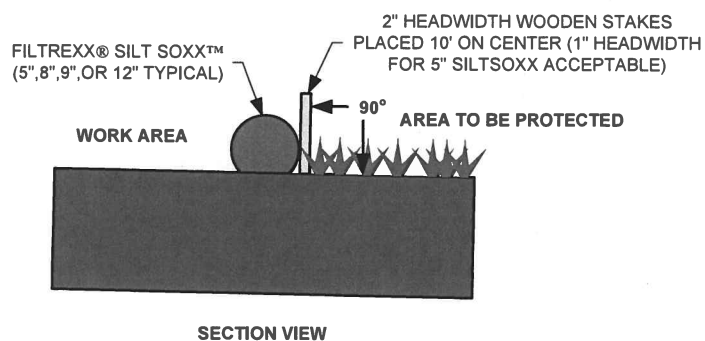
(2) 2"x2"x48+" HARDWOOD STAKES, WRAPPED TOGETHER WITH 16 GAUGE WIRE, 10' O.C.

2"x2"x36" HARDWOOD STAKE, 10' O.C., STARTING 5' FROM ANGLED STAKES

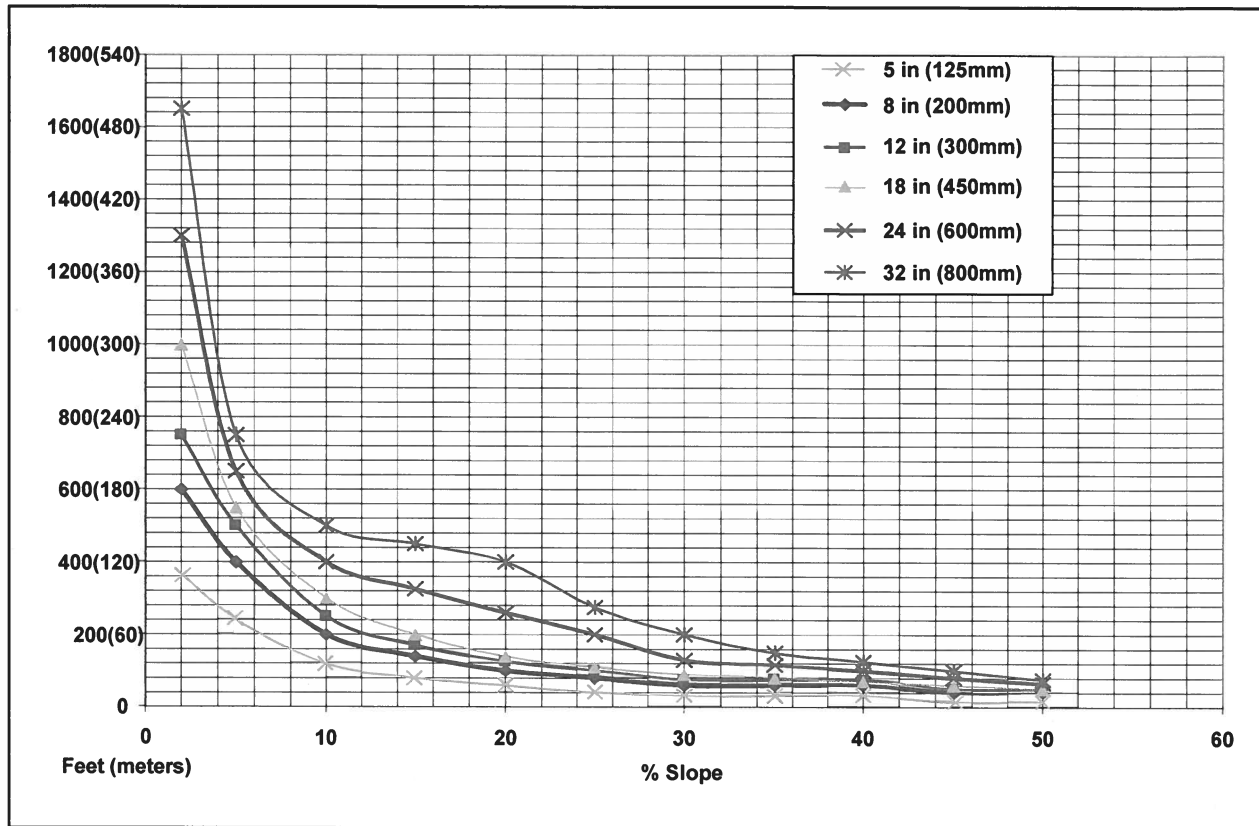


NOTES:  
1. ALL MATERIAL TO MEET FILTREXX® SPECIFICATIONS.  
2. SILT SOXX™ FILL TO MEET APPLICATION REQUIREMENTS.  
3. COMPOST MATERIAL TO BE DISPERSED ON SITE, AS DETERMINED BY ENGINEER.

Figure 1.1. (continued) Engineering Design Drawing for Perimeter Control - Alternative Staking

**FILTREXX® SILT SOXX™**

- NOTES:
1. ALL MATERIAL TO MEET FILTREXX® SPECIFICATIONS.
  2. SILT SOXX™ FILL TO MEET APPLICATION REQUIREMENTS.
  3. COMPOST MATERIAL TO BE DISPERSED ON SITE, AS DETERMINED BY ENGINEER.

**Figure 1.2.** Maximum Slope Lengths of Filtrexx® Perimeter Control Based on a 1 in (25 mm)/24 hr Rainfall Event.

**Table 1.3. Maximum Slope Lengths for Filtrex® Perimeter Control Based on a 1 in (25 mm)/24 hr Rainfall Event.**

Slope Percent	Maximum Slope Length Above Sediment Control in Feet (meters)*					
	5 in (125 mm) Sediment control	8 in (200 mm) Sediment control	12 in (300 mm) Sediment control	18 in (450 mm) Sediment control	24 in (600mm) Sediment control	32 in (800mm) Sediment control
	4 in (100 mm)**	6.5 in (160 mm)**	9.5 in (240 mm) **	14.5 in (360 mm) **	19 in (480 mm) **	26 in (650 mm) **
2 (or less)	360 (110)	600 (180)	750 (225)	1000 (300)	1300 (400)	1650 (500)
5	240 (73)	400 (120)	500 (150)	550 (165)	650 (200)	750 (225)
10	120 (37)	200 (60)	250 (75)	300 (90)	400 (120)	500 (150)
15	85 (26)	140 (40)	170 (50)	200 (60)	325 (100)	450 (140)
20	60 (18)	100 (30)	125 (38)	140 (42)	260 (80)	400 (120)
25	48 (15)	80 (24)	100 (30)	110 (33)	200 (60)	275 (85)
30	36 (11)	60 (18)	75 (23)	90 (27)	130 (40)	200 (60)
35	36 (11)	60 (18)	75 (23)	80 (24)	115 (35)	150 (45)
40	36 (11)	60 (18)	75 (23)	80 (24)	100 (30)	125 (38)
45	24 (7)	40 (12)	50 (15)	60 (18)	80 (24)	100 (30)
50	24 (7)	40 (12)	50 (15)	55 (17)	65 (20)	75 (23)

\* Based on a failure point of 36 in (0.9 m) super silt fence (wire reinforced) at 1000 ft (303 m) of slope, watershed width equivalent to receiving length of sediment control device, 1 in/ 24 hr (25 mm/24 hr) rain event.

\*\* Effective height of Sediment control after installation and with constant head from runoff as determined by Ohio State University.

**Table 1.4. Maximum Slope Lengths for Filtrex® Perimeter Control Based on a 2 in (50 mm)/24 hr Rainfall Event.**

Slope Percent	Maximum Slope Length Above Sediment Control in Feet (meters)*					
	5 in (125 mm) Sediment control	8 in (200 mm) Sediment control	12 in (300 mm) Sediment control	18 in (450 mm) Sediment control	24 in (600mm) Sediment control	32 in (800mm) Sediment control
	4 in (100 mm)**	6.5 in (160 mm) **	9.5 in (240 mm) **	14.5 in (360 mm) **	19 in (480 mm) **	26 in (650 mm) **
2 (or less)	180 (55)	300 (90)	375 (110)	500 (150)	650 (200)	850 (260)
5	120 (37)	200 (60)	250 (75)	275 (85)	325 (100)	400 (120)
10	60 (18)	100 (30)	125 (35)	150 (45)	200 (60)	275 (85)
15	42 (13)	70 (20)	85 (25)	100 (30)	160 (50)	225 (70)
20	30 (9)	50 (15)	65 (20)	70 (20)	130 (40)	180 (55)
25	24 (7)	40 (12)	50 (15)	55 (16)	100 (30)	150 (45)
30	18 (6)	30 (9)	40 (12)	45 (13)	65 (20)	100 (30)
35	18 (6)	30 (9)	40 (12)	45 (13)	55 (18)	75 (23)
40	18 (6)	30 (9)	40 (12)	45 (13)	50 (15)	60 (38)
45	12 (4)	20 (6)	25 (8)	30 (9)	40 (12)	50 (15)
50	12 (4)	20 (6)	25 (8)	30 (9)	35 (10)	40 (12)

\* Based on a failure point of 36 in (0.9 m) super silt fence (wire reinforced) at 1000 ft (303 m) of slope, watershed width equivalent to receiving length of sediment control device, 2 in/ 24 hr (50 mm/24 hr) rain event.

\*\* Effective height of Sediment control after installation and with constant head from runoff as determined by Ohio State University.

## **CONSTRUCTION SEQUENCE**

1. CALL "CALL BEFORE YOU DIG" FOR MARK OUT OF ALL UTILITIES.
2. PRIOR TO COMMENCEMENT OF WORK, A PRE-CONSTRUCTION MEETING SHALL BE HELD WITH TOWN STAFF AND REPRESENTATIVES OF THE CONTRACTOR AND OWNER. AT THIS MEETING, ONE PERSON WILL BE PLACED IN CHARGE OF SEDIMENT AND EROSION CONTROL FOR THE ENTIRE SITE.
3. CONTRACTOR TO STAKE OUT LIMIT OF DISTURBANCE AND VEGETATION TO BE RETAINED. NO DISTURBANCE IS TO TAKE PLACE BEYOND THE LIMITS OF WORK SHOWN.
4. CONTRACTOR TO INSTALL SEDIMENT AND EROSION CONTROLS ALONG THE PERIMETER, AND INSTALL STABILIZED CONSTRUCTION ENTRANCES, AS SHOWN ON THE PLANS.
5. TEMPORARY ORANGE CONSTRUCTION FENCE IS TO BE PLACED ALONG THE PROPOSED LIMIT OF DISTURBANCE AND NO CLEARING OR CONSTRUCTION IS TO TAKE PLACE BEYOND THOSE LIMITS.
6. ONCE EROSION CONTROLS ARE INSPECTED AND APPROVED BY THE TOWN, BEGIN CLEARING AND GRUBBING OF THE DEVELOPMENT AREA INCLUDING SIGHTLINE CLEARING ALONG THE ROAD FRONTAGE. AT THIS TIME TREES BEYOND THE LIMIT OF DISTURBANCE SHALL BE INSPECTED AND LIMBS REMOVED AS NEEDED TO ACCOMMODATE HOUSE CONSTRUCTION. IT IS RECOMMENDED THAT AN ARBORIST INSPECT TREES BEYOND THE LIMIT OF DISTURBANCE THAT ARE ADJACENT TO THE HOUSE AND FLAG ANY THAT IN THEIR OPINION REQUIRE REMOVAL FOR SAFETY OR OTHER REASONS.
7. INITIATE STRIPPING OF TOPSOIL AND STOCKPILE AWAY FROM LEACHING FIELD AREA. SOIL STOCKPILES SHALL BE SURROUNDED BY EROSION CONTROL MEASURES SUCH AS FILTER FENCE OR FILTREXX SILTSOXX.
8. BEGIN EXCAVATION FOR FOUNDATION AND SEPTIC SYSTEM CONSTRUCTION.
9. INSTALL FOUNDATION AND INITIATE FRAMING OF THE HOUSE. CONTRACTOR SHALL WORK WITHIN THE LIMITS OF DISTURBANCE SHOWN. THE USE OF LIFTS OR OTHER EQUIPMENT MAY BE NEEDED TO COMPLETE FRAMING, EXTERIOR SHEATHING, AND FINISHES PARTICULARLY ALONG SOUTH SIDE OF HOUSE AND TO THE REAR OF THE HOUSE (WEST FACING).
10. SLOPES ARE TO BE ESTABLISHED AS SOON AS PRACTICAL BEFORE UTILITY INSTALLATION. STABILIZE ALL SLOPES IMMEDIATELY AFTER THEIR ESTABLISHMENT.
11. INSTALL UTILITIES AND DRIVEWAY.
12. ONCE THE EXTERIOR OF THE HOUSE IS COMPLETE AND NO FURTHER VEHICLE OR MACHINE ACCESS IS NEEDED AROUND THE HOUSE, FINE GRADING OF THE SITE SHOULD BE COMPLETED INCLUDING CONSTRUCTION OF THE RAIN GARDEN.
13. PLACE TOPSOIL, SEED THE LAWN, AND COMPLETE PROPOSED PLANTINGS. INSTALL SPLIT-RAIL FENCE AND WETLAND MARKERS AS SHOWN ON SITE PLAN.
14. THE SEDIMENT AND EROSION CONTROLS SHALL BE MODIFIED BY THE CONTRACTOR AT THE DIRECTION OF THE ENGINEER AND DESIGNATED TOWN REPRESENTATIVE AS NECESSITATED BY CHANGING SITE CONDITIONS.
15. ALL DEWATERING WASTE WATERS SHALL BE MANAGED IN A MANNER CONSISTENT WITH EROSION CONTROL STANDARDS WHICH MINIMIZES THE DISCOLORATION OF THE RECEIVING WATERS.
16. THE SITE SHOULD BE KEPT CLEAN OF LOOSE DEBRIS, LITTER, AND BUILDING MATERIALS SUCH THAT NONE OF THE ABOVE ENTER WATERS OR WETLANDS.
17. A COPY OF ALL PLANS AND REVISIONS, AND EROSION CONTROL INSPECTION REPORTS (IF EQUIRED), SHALL BE MAINTAINED ON-SITE AT ALL TIMES DURING CONSTRUCTION.

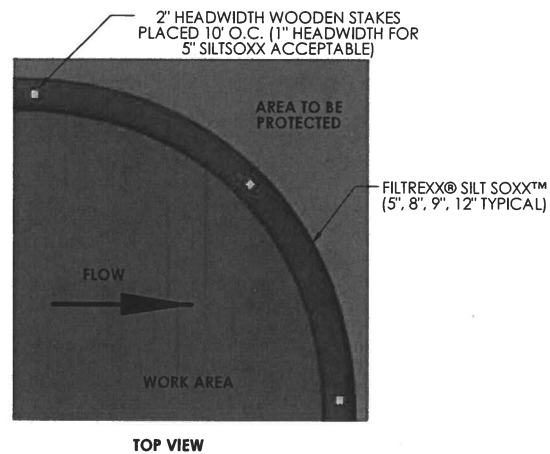
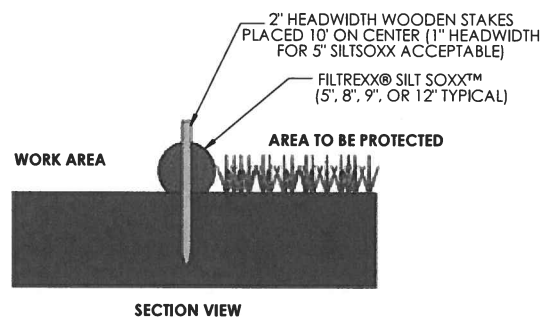
### INSTALLATION

1. Perimeter control will be placed at locations indicated on plans and in a manner as directed by the Engineer or Manufacturer.
2. Perimeter control should be installed parallel to the base of the slope or other disturbed area. In challenging conditions (i.e., 2:1 slopes), a second perimeter control shall be constructed at the top of the slope, or staking may be increased.
3. Effective Sock height in the field should be as follows: 5" diameter Soxx = 4" high; 8" diameter Soxx = 6.5" high; 12" diameter Soxx = 9.5" high; 18" diameter Soxx = 14.5" high; 24" diameter Soxx = 19" high.
4. Stakes should be installed through the middle of the perimeter control on 10 ft (3m) centers, using nominal 2 in (50mm) by 2 in (50mm) by 3 ft (1m) wooden stakes. 5" diameter Soxx may use 1" (25 mm) x 1" (25 mm) x 18" (0.5 m) wooden stakes. In the event staking is not possible, i.e., when perimeter control is used on highly compacted soils or impervious surfaces, sand bags (or equivalent) may be used to stabilize Soxx, as long as effective height is not compromised. On impervious surfaces, concrete blocks (or equivalent) may be used behind the perimeter control to help stabilize during rainfall/runoff events.
5. Alternatively, stakes may be installed directly behind the Soxx at a 90-degree angle to level ground (regardless of slope angle), where stakes are in direct contact with the downslope side of Soxx. If high runoff or sediment accumulation is expected, staking through the Soxx may be required.
6. Staking depth for sand and silt loam soils shall be 12 in (300mm), and 8 in (200mm) for clay soils.
7. Straighten or position the Soxx as needed on the ground, ensuring there is good ground contact and no void spaces under the Soxx.
8. Do not drag Soxx across rough surfaces. If dragging across a rough surface is necessary, place a barrier such as plastic or a tarp under Soxx to prevent tearing.
9. Loose compost may be backfilled along the upslope side of the perimeter control, filling the seam between the soil surface and the device, improving filtration and sediment retention.
10. If the perimeter control is to be left as a permanent filter or part of the natural landscape, it may be seeded at time of installation for establishment of permanent vegetation. The Engineer will specify seed requirements.

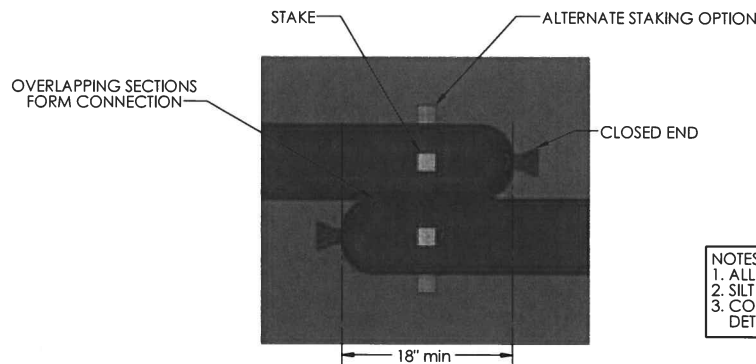
### MAINTENANCE & DISPOSAL

1. The contractor shall remove sediment at the base of the upslope side of the perimeter when accumulation has reached 1/2 of the effective height of the sock, or as directed by the Engineer. Alternatively, a new perimeter control sock can be placed on top of and slightly behind the original one creating more sediment storage capacity without soil disturbance.
2. Perimeter control shall be maintained until disturbed area above the device has been permanently stabilized and construction activity has ceased.
3. The FilterMedia will be dispersed on site once disturbed area has been permanently stabilized, construction activity has ceased, or as determined by the Engineer.

### FILTREXX® SILT SOXX™



### COMPOST SOCK CONNECTION/ATTACHMENT DETAIL



NOTES:  
1. ALL MATERIAL TO MEET FILTREXX® SPECIFICATIONS.  
2. SILT SOXX™ FILL TO MEET APPLICATION REQUIREMENTS.  
3. COMPOST MATERIAL TO BE DISPERSED ON SITE, AS DETERMINED BY ENGINEER.

Refer to Design Specification for complete application, design, installation, maintenance, and removal documentation.







filtrex.com | 877.542.7699 | info@filtrex.com

Filtrex, DrainChex, EnviroSoxx, StormEx, GroSoxx, GreenLoxx, and the Branch & Leaf logo are Registered Trademarks of Filtrex International. SiltSoxx, FilterMedia, and GrowingMedia are Trademarks of Filtrex International. US Patents 7,226,240; 7,452,165; 7,654,292; 8,272,812; 8,439,607; 8,740,503; 8,821,076; 9,044,795; 9,945,090; and 9,982,409 may apply & patents pending. © 2019 Filtrex International, all rights reserved. Filtrex Design Manual Version 11.0

## Filtrexx Siltsoxx Information (<https://www.filtrexx.com/en/products/siltsoxx>)

There are a few siltsoxx products to choose from (probably don't need the Siltsoxx EXTREME, but the other options had potential):

### SILTSOXX PRODUCT CHART

Product Name	SiltSoxx ORIGINAL	SiltSoxx EXTREME	SiltSoxx NATURAL ORIGINAL	SiltSoxx NATURAL PLUS
Mesh Material Type	Multi-Filament Polypropylene (MFPP)	Multi-Filament Polypropylene (MFPP)	All Natural Biodegradable Cotton Fiber	All Natural Biodegradable Wood Fiber
Uses	standard applications	hard surfaces; rugged sites; high traffic	leave on site; short-term	leave on site; long-term
Mesh Opening Size	1/8"	1/16"	1/8"	1/8"
Diameters	5", 8", 12", 18", 24"	8", 12"	5", 8", 12"	5", 8", 12"
Functional Longevity/ Project Duration*	up to 5 yr	up to 5 yr	up to 12 mo	up to 18 mo
Fill Material	Locally sourced FilterMedia	Locally sourced FilterMedia	Locally sourced FilterMedia	Locally sourced FilterMedia
Mesh Color	 green/thin black stripe  tan (5" & 8" only)	 green/black thick stripe  orange	 beige	 off-white

\*Functional longevity ranges are estimates only. Site specific environmental conditions may result in significantly shorter or longer time periods.

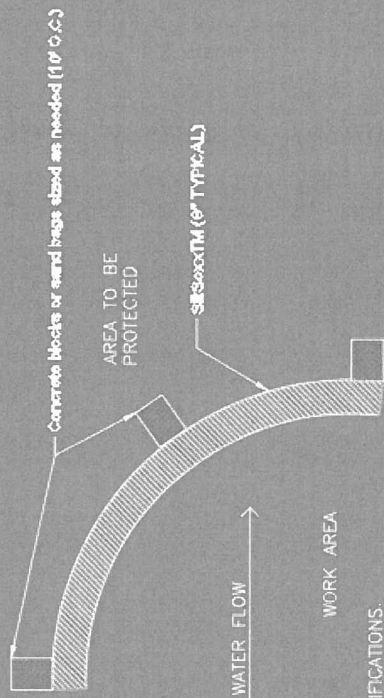
Here is a link to their product catalog that goes into detail regarding each (see pages 4-6):  
[https://www.filtrexx.com/application/files/7115/9665/9761/Filtrexx 2020 Catalog v1-2 web.pdf](https://www.filtrexx.com/application/files/7115/9665/9761/Filtrexx_2020_Catalog_v1-2_web.pdf)

### ENGINEER DESIGN SPECIFICATIONS (DESIGN MANUAL):

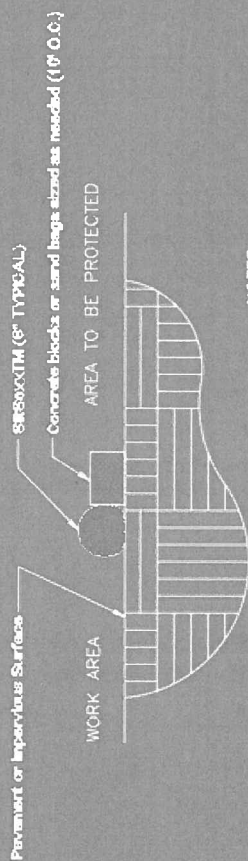
<https://www.filtrexx.com/en/resources/design-specs-cads/filtrexx-design-manual>

### PERIMETER CONTROL INSTALLATION SPEC:

[https://www.filtrexx.com/application/files/6616/1221/6520/SiltSoxx Contractor Installation Spec Perimeter Control 2019 web.pdf](https://www.filtrexx.com/application/files/6616/1221/6520/SiltSoxx_Contractor_Installation_Spec_Perimeter_Control_2019_web.pdf)



**PLAN**



**SECTION**

- NOTES:**
1. ALL MATERIAL TO MEET SPECIFICATIONS.
  2. FILTER MEDIA TO MEET APPLICATION **REQUIREMENTS**.
  3. FILTER MEDIA TO BE DISPERSED ON SITE, AS DETERMINED BY ENGINEER.

## 8 INCH SILTSOXX

NOT TO SCALE